An aerial photograph of a landscape featuring rolling hills, a large lake, and a forested valley. The text is overlaid on the image.

A spatial view of the KMR programme

(March 2022)

Introduction

The following presentation presents maps and tables showing:

1. Landowners engaged (Landowner Grants)
2. Whenua Whānui Fund applicants
3. Accredited Nurseries
4. Accredited Contractors
5. Combined Supplier view

All of the information is displayed in relation to:

- The Kaipara Moana catchment and sub-catchments
- Treaty Statutory Areas of Interest

Legend and Key to the mapping in this presentation

 Kaipara Moana Catchment Boundary

 Surface Water Catchments


 Kaipara Moana Catchment

 KMR accredited contractors

 KMR accredited nurseries

 Ngāti Whātua o Kaipara

 Te Roroa

 Te Uri o Hau


 Wairua River Catchment

 Mangakahia River Catchment

 Hoteo River Catchment

 Te Rūnanga o Ngati Whātua

 Whenua Whānui Fund Applicants

 KMR Landowners/Landholders within the KMR grant schemes

Landowner Grants

KMR Landowners Engaged

Progress is starting to accelerate with landowner engagement and associated production of Sediment Reduction Plans through the Landowner Grant Scheme.

Geographical distribution of engagement is widespread.

222 Landowners engaged in developing Sediment Reduction Plans:

- 145 Landowner engaged directly with KMR (including TUOH)
- 77 Landowners engaged directly through the Fonterra Tiaki scheme

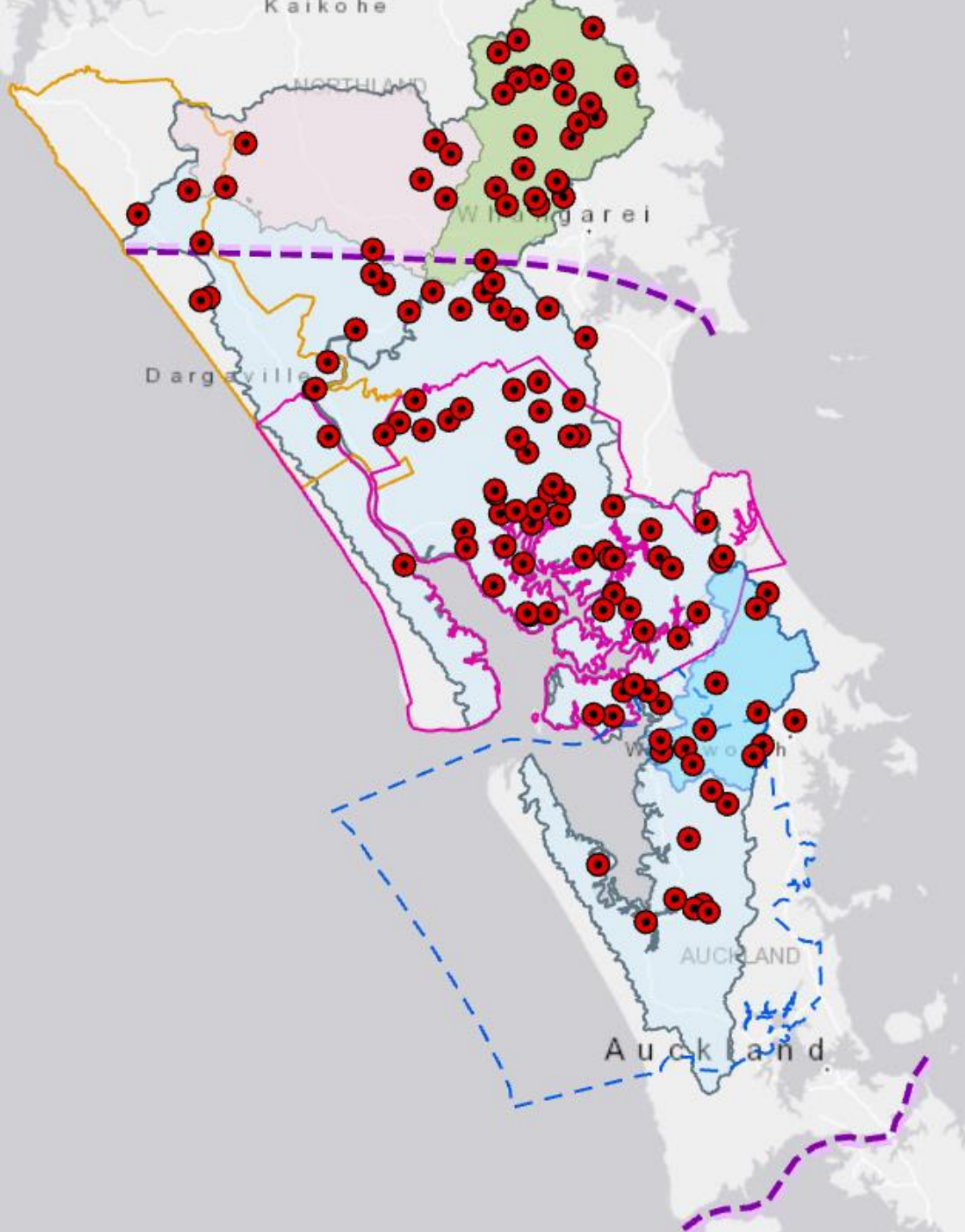
- 24,005 ha (estimated) directly engaged with KMR
- 14,202 ha (estimated) engaged with Fonterra

Overall distribution of Landowners/Landholders engaged with KMR

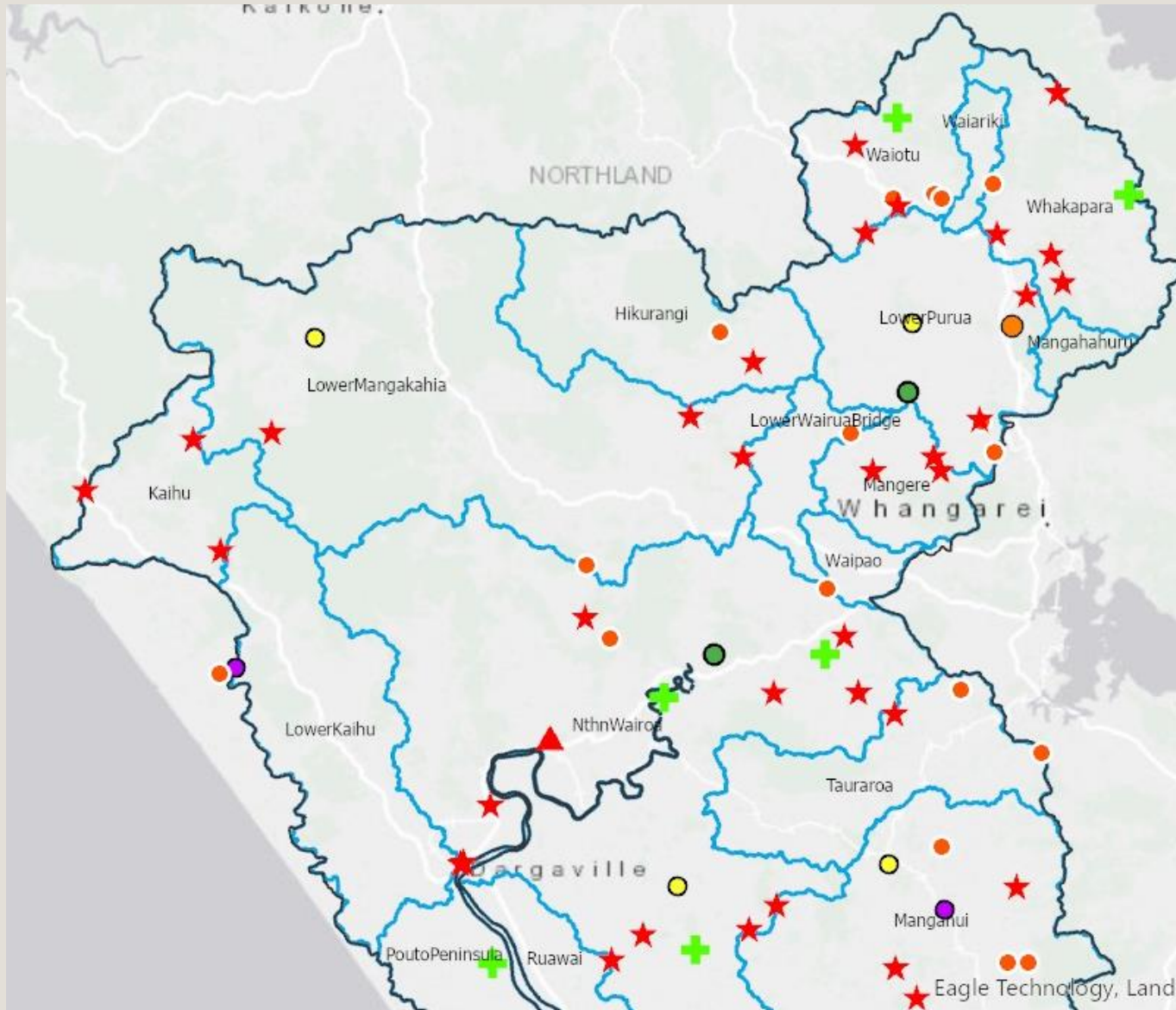
(Landowner Grants at various stages)



Landowners/Landholders engaged
through the KMR Landowner Grant
scheme



Landowners/Landholders - North



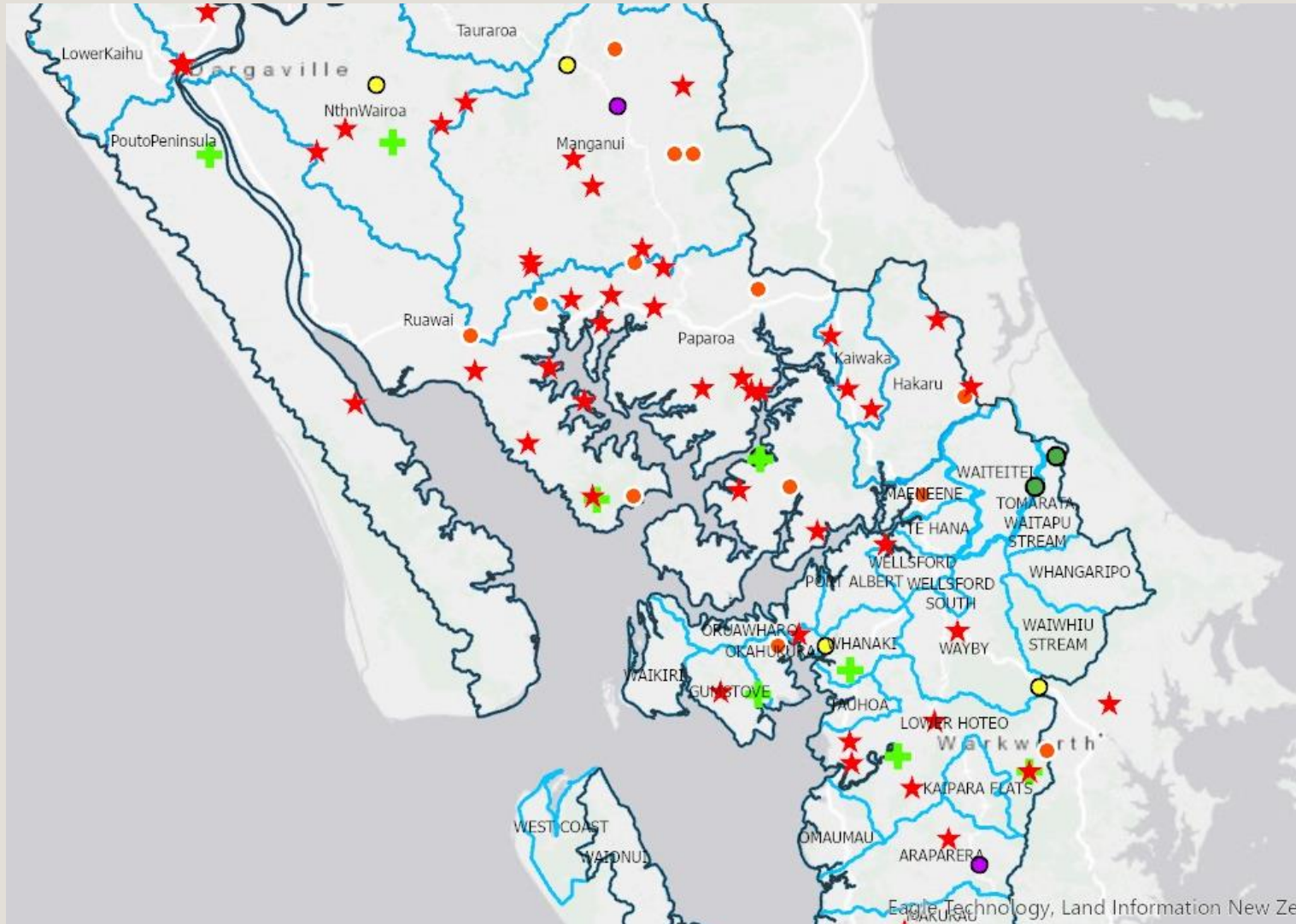
Map Legend

- Kaipara Moana Catchment
- Surface Water Catchments
- ▲ Contacted by FA
- File opened in IRIS
- Finalised and Paid
- ✚ Needs to be allocated to FA
- Not Eligible (2022)
- Not Interested
- SRP Approved
- ★ Working with Field Advisor



**Kaipara Moana
Remediation**

Landowners/Landholders - Central



Map Legend

- Kaipara Moana Catchment
- Surface Water Catchments
- ▲ Contacted by FA
- File opened in IRIS
- Finalised and Paid
- ✚ Needs to be allocated to FA
- Not Eligible (2022)
- Not Interested
- SRP Approved
- ★ Working with Field Advisor



**KAIPARA MOANA
REMEDICATION**

Landowner/Landholder (LO/LH) applicant pipeline

Status of Landowner /Landholder grant with KMR	Number of Landowners /Landholders	Estimated area (ha) of Whenua (where known)
Expression of Interest logged and file opened in IRIS (database)	3	250
LO/LH no longer interested (identified via Field Advisor follow up)	6	N/A
LO/LH not eligible based on criteria	1	10
LO/LH needs to be allocated Field Advisor	13	2,320
LO/LH contacted by Field Advisor	1	200
LO/LH working with Field Advisor	81	10,505
Sediment Reduction Plan approved	29	7,772
LO/LH project finalised and paid	11	2,948
Fonterra Tiaki Plans and Funding agreements	77	14,202
Totals	222	38,207

Whenua Whānui Fund

Whenua Whānui Fund Applicants

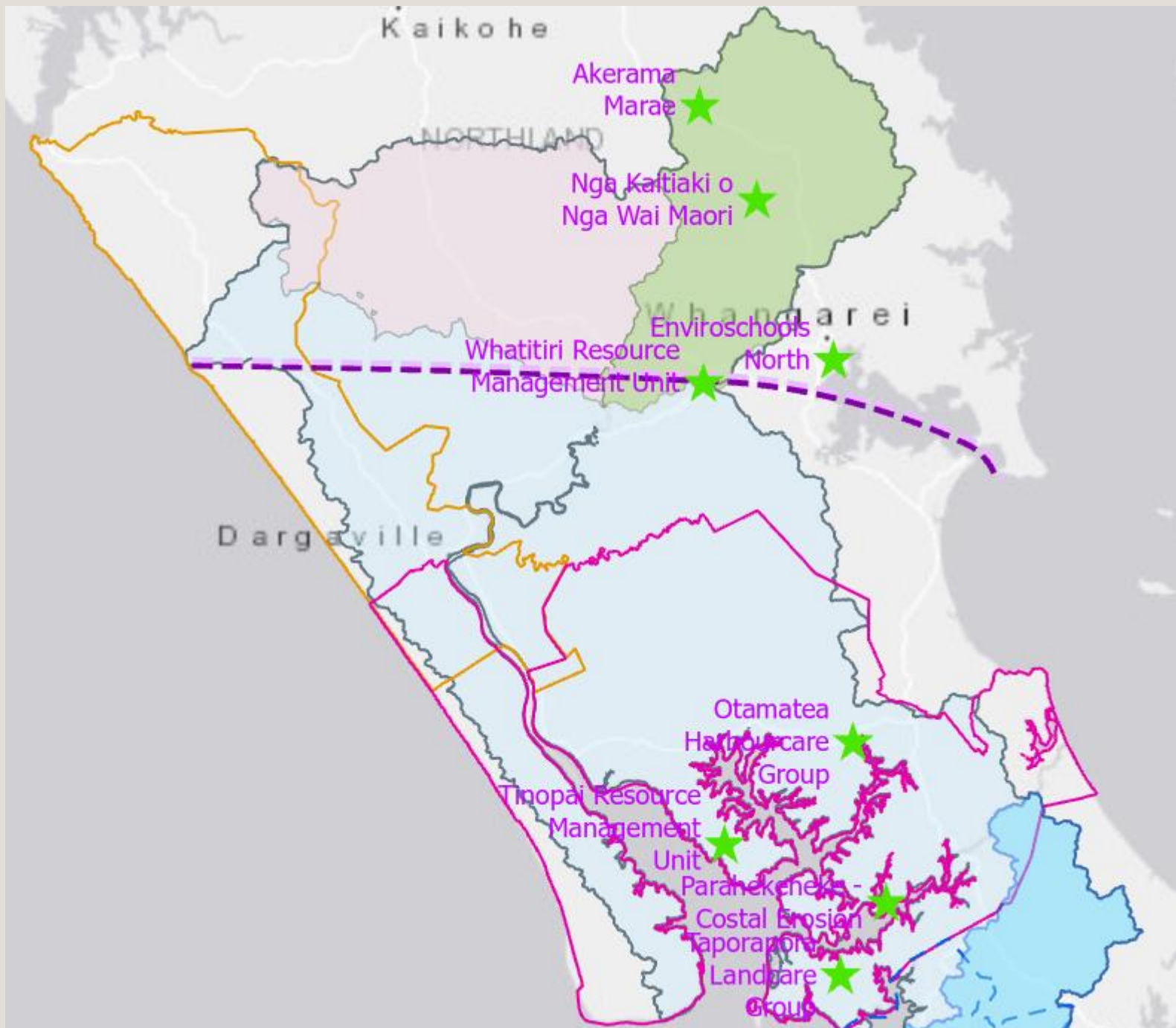
1 EOI received

3 groups working
with Field Advisor
to develop EOI or
Sediment Reduction
Plan

Engagement focus is
to clarify projects

1 group withdrawn

Entity/roopu	Project Focus	WWF proposal status	Catchment. 5 main river systems	Area of Interest
Taporapora Landcare Group	Remediation, fencing and planting, coordinating actors and supporting landowners at the scale of peninsula.	EOI received, working with Field Advisor. Preparing SRP as application.	Okahukura	Te Uri-o-Hau
Whatitiri Resource Management Unit	Navigate amongst iwi, hapū, marae, community groups, landowners, agencies and others. We assist groups to overcome their unique challenges by identifying, enabling and facilitating the	Working with Field Advisor. Preparing SRP as application	Whatitiri sub-catchment	Ngāpuhi
Tinopai Resource Management Unit	Wetland restoration, water catchment restoration, peninsular scale engagement and education for sediment reduction, fencing and planting.	Working with Field Advisor. Wananga and Field Visits Preparing SRP as application.	Tinopai Peninsula	Te Uri-o-Hau
Te Tari Taiao Ao	Engagement and training of mana whenua rangatahi.	Pre EOI, Working with Field Advisor.	Southern catchments	Ngā Maunga Whakahii
Enviroschools North	Working with schools, marae, community groups and landowners on fencing and planting as project based learning for youth.	Pre EOI, Working with Field Advisor.	Northern Catchments	-
Enviroschools South	Working with schools, marae, community groups and landowners on fencing and planting as project based learning for youth.	Pre EOI, Working with Field Advisor.	Southern Catchments	-
Toa Landscapers Ltd	To restore the Araparera river with waters fit to swim in at all times and a thriving marine eco-system that provides sustainable kaimoana resources for all of the community and future generations.	Pre EOI	Araparera River	Ngā Maunga Whakahii
South Kaipara Landcare	Protect biodiversity on south head.	Pre EOI	South Head, South Kaipara	Ngā Maunga Whakahii
Otamatea Harbourcare Group	Confirmed they are accredited as a nursery. Changes in the organisation,	Pre EOI	Otamatea/ Maungaturoto	Te Uri-o-Hau
Parahekeheke - Coastal Erosion	Focusing on planting active erosion on Kaipara Moana Coastal Slopes .	Pre EOI	-	Te Uri-o-Hau
Otakanini Topu	12,500 acre sheep and beef (New Trustees).	Pre EOI	South Head, Southern Kaipara	Ngā Maunga Whakahii
Ngā Kaitiaki O Ngā Wai Māori	Catchment scale remediation.	Pre EOI	Hikurangi Swamp (northern catchment)	Ngāpuhi
Akerama Marae	Catchment scale remediation.	Pre EOI		Ngāpuhi
Haukāinga Puatahi Marae	Nursery hub, sediment reduction, project coordination, monitoring, pest control, hub whanau and community.	Project withdrawn	Glorit, South Kaipara	Ngā Maunga Whakahii



Whenua
Whānui Fund
Applicants

North



**KAIPARA MOANA
REMEDICATION**



Whenua
Whānui Fund
Applicants

South

KMR Nurseries

Overall Distribution of Nurseries

- Good distribution of nurseries across catchment.
- A noticeable gap in the Mid North
- However, this area is effectively covered by Te Arai Native Nursery and other large providers who can service large parts of the Kaipara catchment
- Large gap at Pouto Peninsula and high delivery costs an issue in this area.
- Satellite Nursery potential to service local peninsulas



KMR Accredited Nurseries

- 19 Nurseries applied to be involved
- 16 Nurseries are Accredited or Accredited with conditions
- 3 Nurseries are in the accreditation process

- **Plenty of trees available to meet KMR needs:**
 - ✓ Current production 19 M plants annually
 - ✓ Aspirational production: 45 M trees tree annually

- Good mix of commercial, Iwi/Hapū and community-led nurseries
- KMR to support nurseries to maintain good practice and retain full accreditation

List of Accredited Nursery List and Status (Part one)

Note : Colour Code relates to accreditation status.

KEY ----->	Accredited	Accredited - with conditions	Accreditation in progress	Aspirational nursery	*** Iwi-affiliated nursery
NURSERY NAME	SERVICE AREA	ACCREDITATION STATUS	TANGATA / NURSERY STAFF	AVERAGE ANNUAL PRODUCTION	ASPIRATIONAL PRODUCTION
AKERAMA MARAE ***	North-east catchment	*Accreditation underway	3.5 FTE staff; 15 seasonal	50,000	100,000
ENVIROSCHOOLS / RAHUI GARDENS	Central catchment	Accredited - with conditions	Seasonal staff only. 1 FTE pending	15,000	50,000
FOREST FLOOR	North-central catchment	Accredited	5FTE staff; 5 seasonal	200,000	400,000
KAIPARA COAST PLANT CENTRE	South catchment	Accreditation offered; nursery response pending	10+ FTE staff	1,000,000	1,000,000
KAURI PARK NURSERIES	Central catchment	Accredited	60 FTE staff; <100 seasonally	15,000,000	30,000,000
MANGAWHAI NATIVES	Central-east catchment	Accredited	4 FTE staff; 1 seasonal	350,000	500,000
MIRO AGRI	South-central catchment	Accredited - with conditions	2 P/T staff	30,000	50,000
NGATHIHINE WAIORA	Far north catchment	Accredited - with conditions	2 FTE staff; 3 seasonal	300,000	500,000
TE ARAI NATIVE NURSERY	Central catchment	Accredited	13 FTE staff; mostly hapū	800,000	5,000,000
OTAMATEA HARBOUR CARE	Central catchment	Accredited - with conditions	Volunteer staff	5000	In transition
REFOREST	South-east catchment	Accredited - with conditions	1FTE staff; 1 seasonal	100,000	At capacity
RURAL DESIGN	Central catchment	Accredited	19 FTE staff; <40 seasonally	1,500,000	2,500,000

List Accredited Nursery List and Status (Part Two)

KEY ----->	<i>Accredited</i>	<i>Accredited - with conditions</i>	<i>Accreditation in progress</i>	<i>Aspirational nursery</i>	<i>*** Iwi-affiliated nursery</i>
NURSERY NAME	SERVICE AREA	ACCREDITATION STATUS	TANGATA / NURSERY STAFF	AVERAGE ANNUAL PRODUCTION	ASPIRATIONAL PRODUCTION
SCRUB GROWERS	South catchment	Accredited	16 FTE staff; plus seasonal	1 million +	Capacity for 2 mil
SOUTH KAIPARA LANDCARE	South-west catchment	Accreditation offered; nursery response pending	Volunteer staff; aspiration to employ 2 FTE Kaitiaki	20,000	20,000
TAWA RD NURSERY	Far-south catchment	Nursery visit pending - Char			
TE HANA NURSERY	Central catchment	Nursery visit pending - Char			
TE ROROA - TE TOA WHENUA NURSERY***	North-west catchment	Accredited - with conditions	4 FTE	60,000	200,000
WAIMARIE NURSERY***	North-central catchment	Accredited - with conditions	2 P/T staff; 4 volunteers	90,000	2,700,000 (pending major planned development)
WHENUANUI***		With Maurikura	1 P/T staff	20000	TBC

Note: Colour Code relates to nursery accreditation status.

KMR-Accredited Nursery Hui 2022

Hui One: 17 March 2022

14 Nursery Managers in attendance

Agenda:

- Clarify KMR staff roles & lines of communication for nurseries
- KMR Update
- Plant supply for 2022 - 2023 - processes and questions

Hui Two: 24 March 2022

12 Nursery Managers in attendance

Agenda:

- Address issues arising from Hui 1
- KMR Workforce update
- KMR species list discussion

Hui Three: 31 March 2022

15 Nursery Managers in attendance

Agenda:

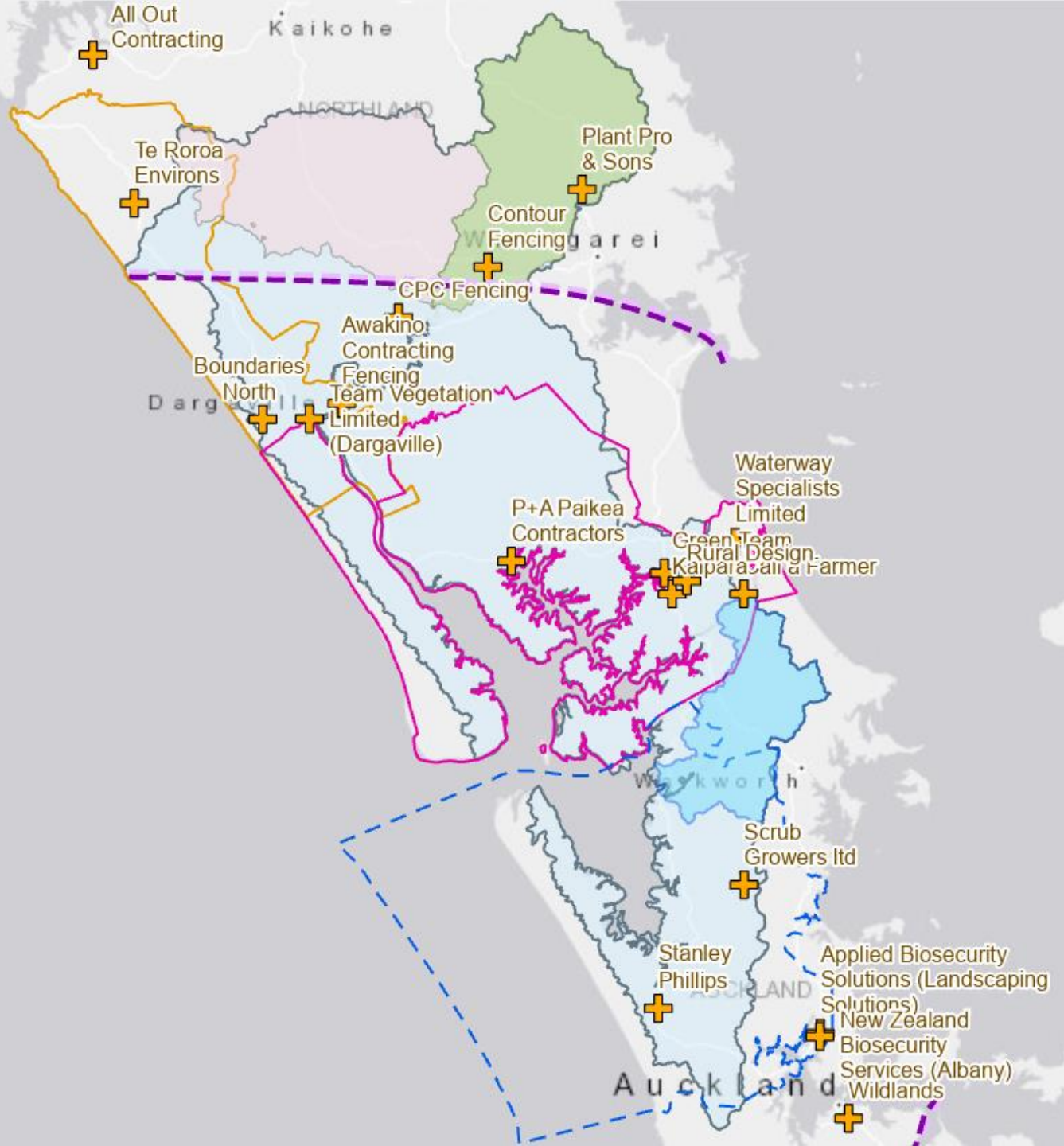
- Address issues arising from Hui 2
- KMR Update
- KMR Seed Library: Concept design, followed by Q + A

- 16 Accredited nurseries (total)
- All Accredited nurseries actively engaged by KMR
- Nursery stock-list compilation underway
- Plant ordering process (administration) designed & tested
- First KMR plant orders underway
- Plant orders in 2022 will reflect Foundation Planting demand
- Pre-order model to begin Spring 2022 for planting in Winter 2023+



**KAI PARA MOANA
REMEDICATION**

KMR Contractors



Overall distribution of accredited contractors

Accredited KMR Contractors

21 Total Accredited Contractors (to date).

Breakdown of Services Provided:

- ✓ 7x Fencing only contractors
- ✓ 1 x Spraying only contractor
- ✓ 10 x Revegetation & spraying contractors
- ✓ 2 x Revegetation, spraying & fencing contractors
- ✓ 1 x Revegetation only contractor

List of Accredited KMR Contractors (Part one)

KEY ----->	<i>Accredited</i>	<i>Accredited - with conditions</i>			
Industry	Company	Email	Office/Yard Location	Catchment/ Sub catchment (Areas of operation)	FTE
Fencing	Awakino Contracting Fencing	mark@acfencing.co.nz	125 Awakino Point East Road,	All areas in Kaipara catchment	3 FTE Up to 6 Seasonal
Fencing	Call a Farmer	info@callafarmer.co.nz	174 Mangawhai Road, RD 5	East to Mangawhai West to ōtamatea, oneriri, ōruawharo, Tauhoa South to Warkworth North to Brynderwyn's	4 FTE
Fencing	Contour Fencing	contourfencing.nz@gmail.com	276 Neville Rd, RD1 Northland	No area specified	6 FTE
Fencing	CPC Fencing	cpc.fencing@yahoo.co.nz	1488 Kirikopuni Valley Road	South to Puhoi North to Whangarei	14 FTE up to 20 Seasonal
Fencing	Fencing Specialists	fencingspecialists.nz@gmail.com	93 Hodgson Road, RD1	All areas in Kaipara catchment	3 FTE 1 Seasonal
Fencing	Stanley Phillips	stanleyphillips@hotmail.com	25 Hutchinson Road, Helensville	All areas South of Kaiwaka (including West to South Head)	6 FTE 2 Seasonal
Fencing	Boundaries North	shenefriedrich@yahoo.com	707 Bayleys Coast Rd, Dargaville	Predominantly Northern Catchment but available for all Kaipara catchment	1FTE
Fencing + Revegetation + Spraying +	Waterway Specialists Limited	Tim@waterways.org.nz	57 Bagnal Road	All areas in Kaipara catchment	14 FTE
Fencing + Revegetation + Spraying +	All out Contractors Ltd.	alloutcontractingltd@outlook.com	807 SH 12 WHIRINAKI	All areas of Kaipara catchment	9 FTE up to 2 Seasonal

Note : Colour Code related to accreditation status.

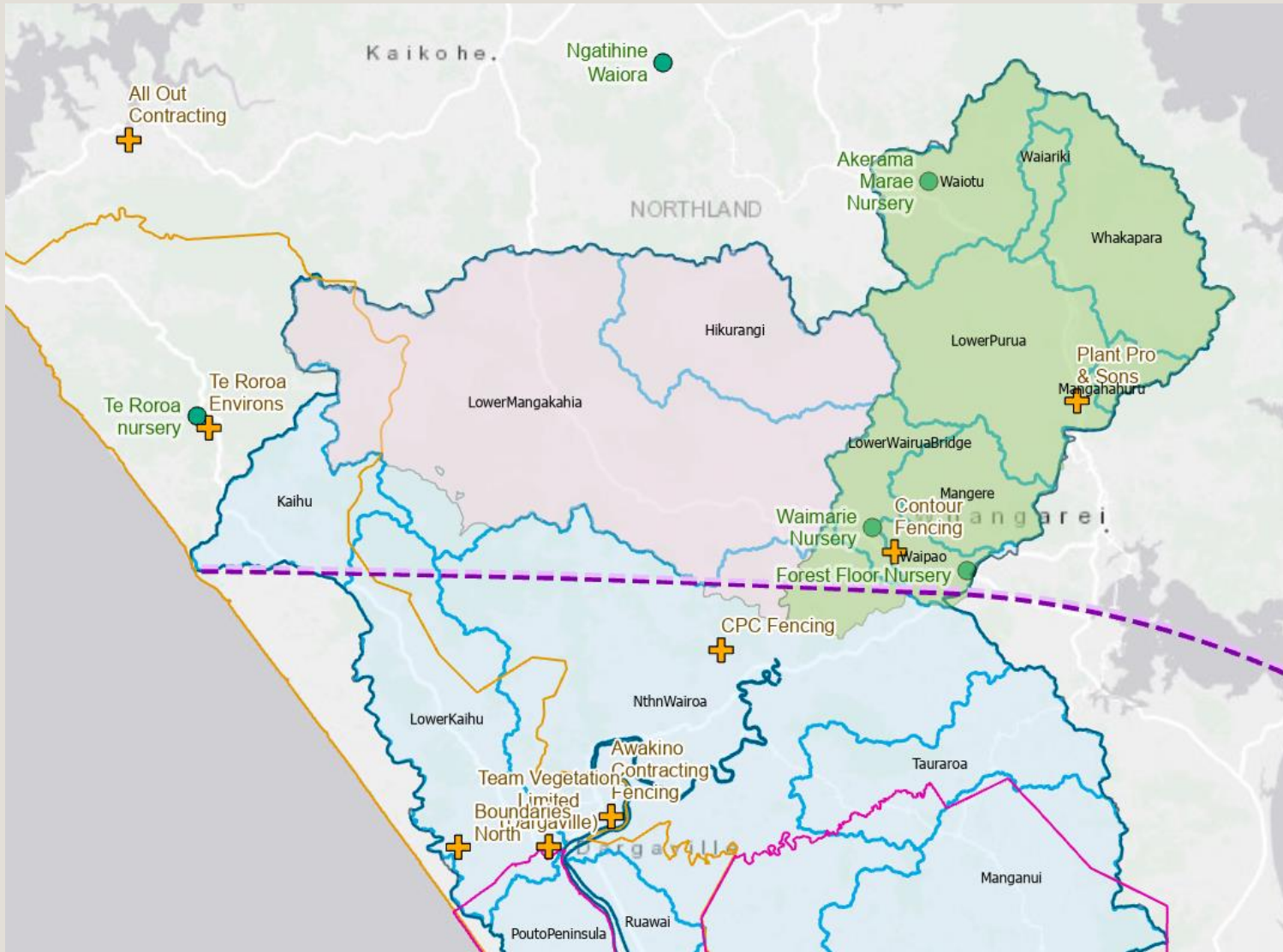
List of Accredited KMR Contractors (Part Two)

KEY ----->	<i>Accredited</i>	<i>Accredited - with conditions</i>			
Industry	Company	Email	Office/Yard Location	Catchment/ Sub catchment (Areas of operation)	FTE
Revegetation	P+A Paikea Contractors	paulandanita@orcon.net.nz	Matakohe	No area specified	2 FTE Up to 12-30 seasonal
Revegetation + Spraying	Applied Biosecurity Solutions	Brent.Hazeldine@appliedbiosecuritysolutions.co.nz	10 Te Kea Place, Rosedale	Primarily southern Catchment	10 FTE
Revegetation + Spraying	Green Team Kaipara	tanehenderson27@gmail.com	16 Settlement Road	All areas in Kaipara catchment	18 FTE Up to 30 Seasonal
Revegetation + Spraying	Kauri Park	vern.w@kauripark.com	2180 Hwy 1, Kaiwaka	All areas in Kaipara catchment	70 FTE
Revegetation + Spraying	New Zealand Biosecurity Services	danielle.hancock@biosecurity.net.nz	9B Beatrice Tinsley crescent, Rosedale	All areas in Kaipara catchment	33 FTE
Revegetation + Spraying	Plant Pro & Sons	jerome@plantpro.co.nz	561 State Highway 1, Kauri, Whangarei 0185	From Northern boundary south to Mangawhai	20 FTE
Revegetation + Spraying	Scrub	jane@scrub.co.nz	437 Monowai Road, RD1, Wainui	Primarily southern Catchment	20FTE 5 Seasonal
Revegetation + Spraying	Rural Design	blake@ruraldesign.co.nz	300 Kaiwaka-Mangawhai Road, RD 5	All areas in Kaipara catchment	52 FTE (Across entire business)
Revegetation + Spraying	Team Vegetation Limited	paul.rountree@teamvegetation.co.nz	103 Beach Road,	All areas in Kaipara catchment	12 FTE Up to 15 Seasonal
Revegetation + Spraying	Wildlands	Lance@wildlands.co.nz	14 Nixon Street, Grey Lynn, Auckland	Southern catchment	40 FTE (Auckland/Northland)
Revegetation + Spraying	Te Roroa Environs	environs@teroroa.iwi.nz	1 Waipoua River Road waipoua	Predominantly Northern Catchment but available for all Kaipara catchment	5 FTE Up to 11 Seasonal
Spraying	AgriPest	dan@agripest.co.nz	15 Boler Road, Tauhoa, RD 4	West to Tinopai South to bottom of catchment	1 FTE 3 Seasonal

Note : Colour Code related to accreditation status.

**Overview of KMR suppliers
(nurseries, contractors):**

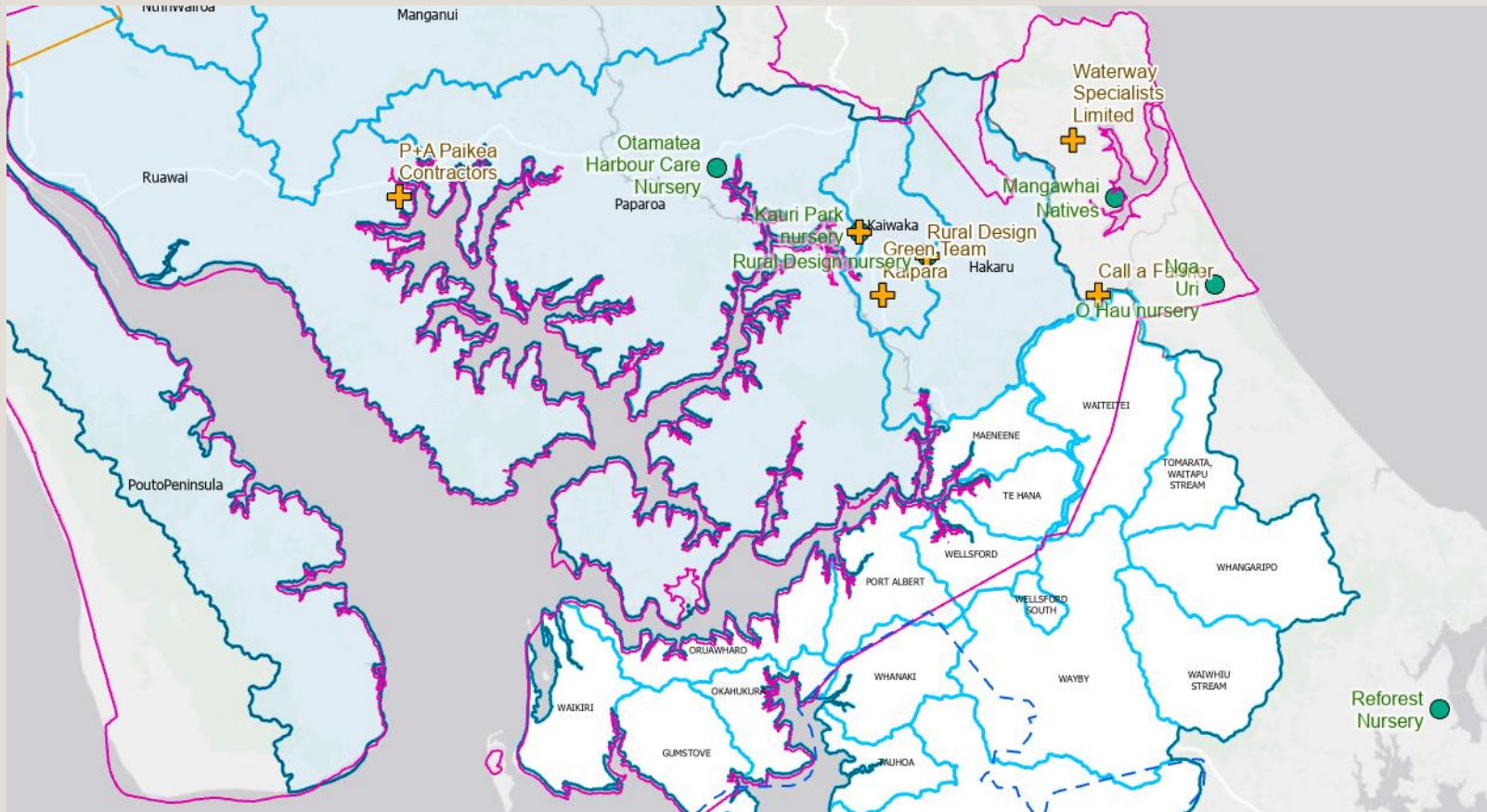
Implications for KMR



Suppliers - North

- Northern part of KMR contains a large numbers of landowners and will require full suite of services
- Te Roroa Nursery is expanding (keen on supplying KMR from next season)
- Akerama nursery is expanding with 1BT investment and is linked to Waiotū catchment group of Landowners.
- Good mix of fencers and vegetation spraying / planting teams

Suppliers - Central



- Like the north of the catchment, there are large areas absent of both nurseries and contractors.
- However, around Kaiwaka, there is a density of nurseries and contractors, which enables centralised servicing of the KMR catchment, both the central KMR area and beyond.
- Te Arai Native Nursery and other large providers have this central area well serviced.

Suppliers - South

- A large number of nurseries in this area.
- A small number of accredited fencing and planting contractors (but this may just reflect the amount of wider construction and subdivision of land in Auckland)
- Biosecurity teams also able to service this part of the catchment



Pātai?